

Estimated ZERO MILL NET Increase over the Current Levy School Bond Proposal Language Summary

There will be two (2) proposals on the August 6, 2024 ballot. These ballots can be viewed in full at:
www.whiteford.k12.mi.us/our-district/bond-projects/

I.

Shall Whiteford Agricultural School District of the Counties of Monroe and Lenawee, Michigan, borrow the sum of not to exceed Nine Million Six Hundred Thousand Dollars (\$9,600,000) and issue its general obligation unlimited tax bonds therefor, in one or more series, for the purpose of:

erecting, furnishing, and equipping additions to Whiteford Elementary School; remodeling, furnishing and refurbishing, and equipping and re-equipping Whiteford Elementary School; acquiring, installing, equipping, and re-equipping Whiteford Elementary School for instructional technology; erecting, remodeling, and equipping and re-equipping athletic support buildings and additions to athletic support buildings; and preparing, developing, improving, erecting, and equipping athletic fields and facilities, structures, and sites?

II.

Shall Whiteford Agricultural School District of the Counties of Monroe and Lenawee, Michigan, borrow the sum of not to exceed Four Hundred Thousand Dollars (\$400,000) and issue its general obligation unlimited tax bonds therefor, for the purpose of:

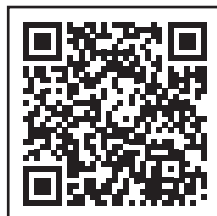
preparing, developing, and improving athletic fields, including installing synthetic field turf for the baseball and softball fields?

Bond proceeds **CANNOT** be used for:

- General operating expenses or maintenance
- Classroom textbooks or educational materials
- Administration, professional or support staff benefits, salaries, and/or wages

For further information, please contact:

Scott L. Huard, Ed.S., Superintendent
Phone: (734) 856-1443, Ext. 101
Email: scott.huard@whiteford.k12.mi.us



WHITEFORD

Agricultural School

Bond Election Information

Don't forget to vote **BY:**

Tuesday, August 6, 2024

ZERO MILL NET INCREASE

(estimated from the current levy)



VOTER INFORMATION

Where to vote?

Visit www.michigan.gov/vote to locate your polling place or to register to vote.

Who can vote?

Any registered voter living in the Whiteford Agricultural School District.

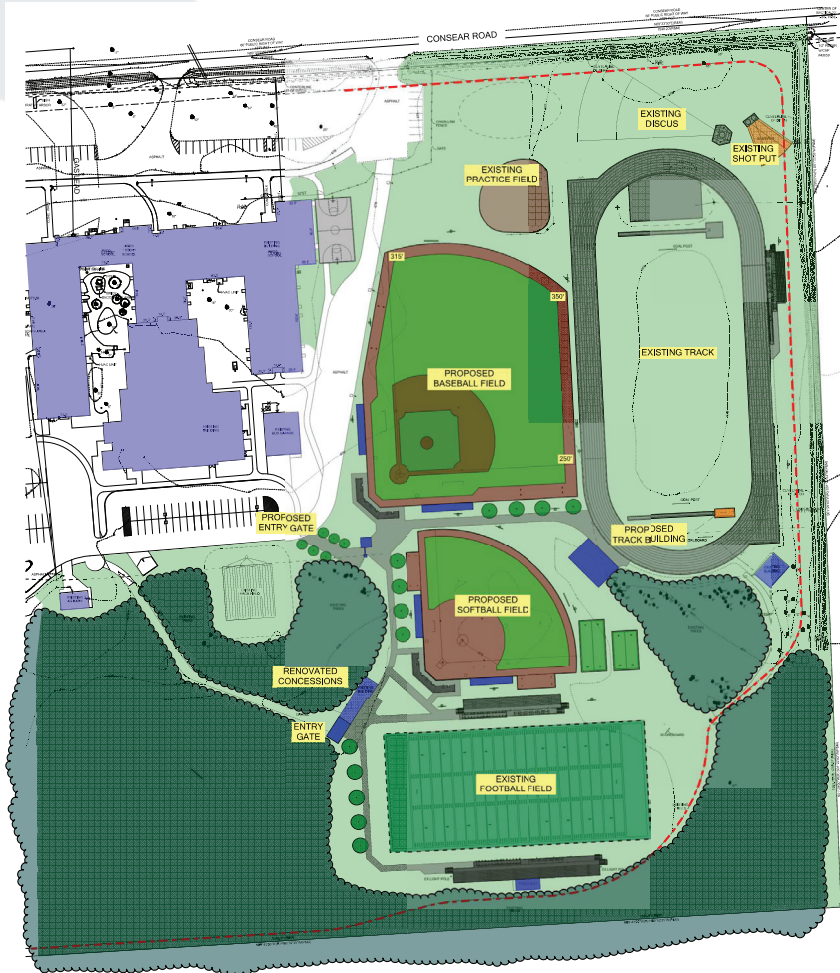
Absentee Voting

Visit www.michigan.gov/vote to request an absentee ballot. Ballots will be available by June 27, 2024.

Reminder:

You are able to register to vote up until and on election day.

2024 Bond | VOTE BY AUG. 6TH



DISTRICT IMPROVEMENTS

There will be two (2) proposals on the August 6, 2024 ballot. These ballots can be viewed in full at: www.whiteford.k12.mi.us/our-district/bond-projects/

Proposal 1 - If passed would generate \$9.6 million for the following improvements:

Elementary School

- Add Four Classrooms
- Add Flex Space/Bathroom/Storage
- Add Two Single Stall Bathrooms
- Replace Roof
- Upgrade Boiler/Pump

Athletic Field

- Replace all Sports Field Drainage Tiles, Irrigation, and Playing Surfaces
- Relocate Baseball and Softball Fields
- Replace Dugouts, Press Boxes, Fencing, Backstops, and Bleachers

Proposal 2 - If passed would generate \$400,000 for adding synthetic field turf for softball field and baseball infield instead of just natural grass outlined in Proposal 1. Essentially, the passing of this proposal would add turf if Proposal 1 passes. If it fails, the fields would remain natural grass.

What does it cost me?

Since these bond proposals, if passed, are expected to keep the tax rate the same as the current levy, this is expected to be a "ZERO MILL" net increase from the current levy. If both proposals pass, the tax rate is estimated to remain the same at 4.93 mills after the bonds are issued.

Why is the district proposing an Estimated Zero Mill net increase bond proposal now?

We have an opportunity to generate new funds for capital improvements with an estimated Zero Mill net increase from the current bond levy. As part of the Strategic Plan 2022-2027, Whiteford Schools wants to remain a small district that meets the individual needs of the students and families it serves. It is our goal to keep KG-5th grade classes at twenty-two (22) students per classroom, which allows for a bit of growth with new students moving into the district. We project that the district would need to offer three sections of each grade level at the elementary to accomplish this ratio.

In order to successfully carry out this plan, we need four (4) additional classrooms at the elementary. The elementary flex addition would be utilized as a creative space for Physical Education (PE/Gym), indoor recess, building-wide assemblies, and other events. The athletic improvements are also addressed in our current Strategic Plan to improve and maintain the physical assets of the district. We have aging softball and baseball dugouts and press boxes. The playing surfaces do not drain well during the fall and spring sports' seasons for the football, softball, and baseball fields.